



STRETCH RACK

The stretch rack provides the most dense bike parking solution. The two tier design minimizes footprint, and the space saving vertical stagger further maximizes bike density. Available in locking and non-locking options, the stretch rack is a versatile, modular indoor solution for long term parking needs.



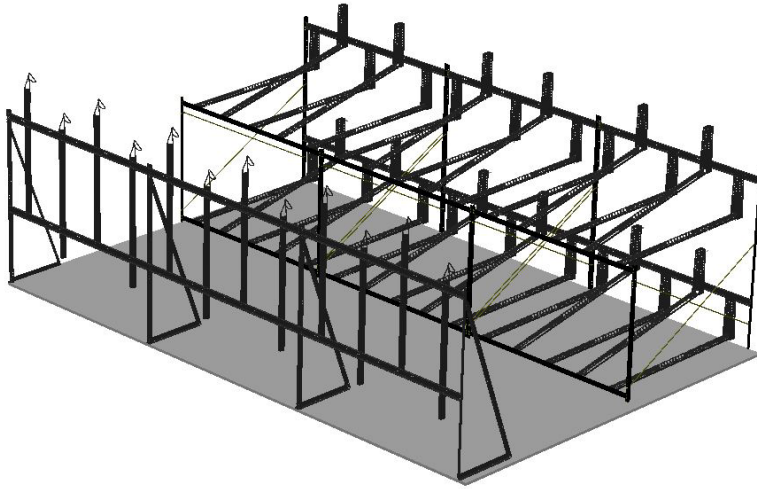
Specifications

	Stretch Rack				Stretch Rack - Locking			
Bike Capacity	10 bike	8 bike	8 bike	6 bike	10 bike	8 bike	8 bike	6 bike
Model Number	8010	8080	8018	8016	8110	8180	8118	8116
Bike Spacing	14.4"	18"	13.5"	18"	14.4"	18"	13.5"	18"
Foot Print (width x depth)	72x63"	72x63"	54x63"	54x63"	72x63"	72x63"	54x63"	54x63"
Ceiling Height Min.	8ft	8ft	8ft	8ft	8ft	8ft	8ft	8ft

Note: Saris Parking Systems representatives can assist with custom layout and spacing to meet your room dimensions and desired bike capacity.

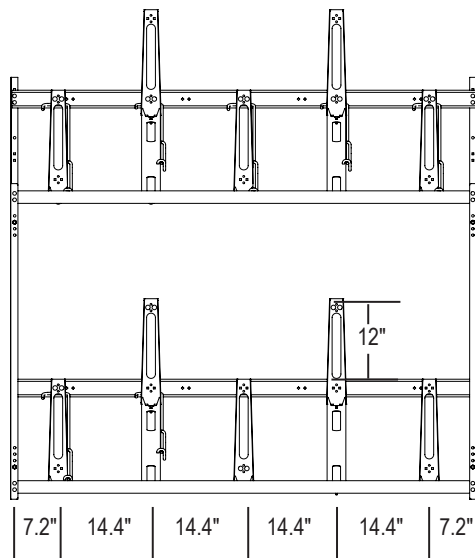
Stretch Rack

Recommended Spacing

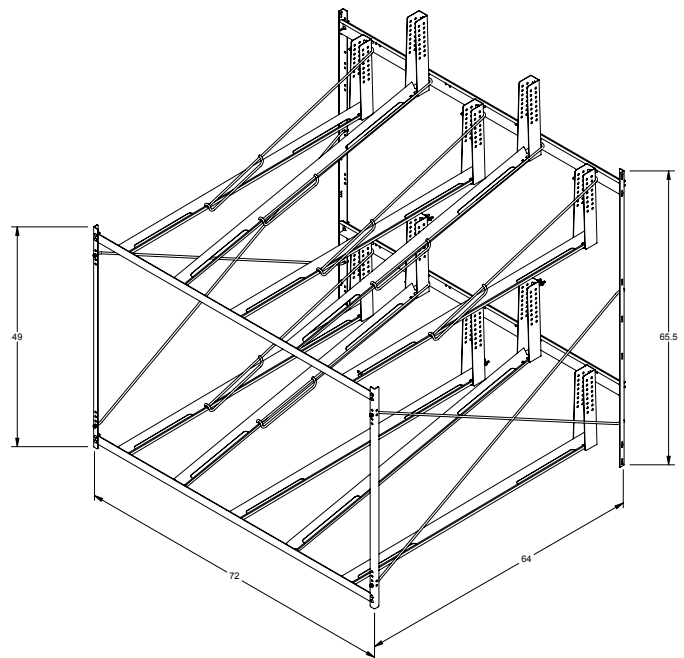


Product Details

- Modular construction allows for easy expansion, side by side or back to back
- Staggered bike position saves space and eases clearance between bikes
- Can be combined with vertical racks for full bike room layout
- Does not require anchoring (wall or floor)
- Bolt together design



8110 Shown



Stretch Rack as
manufactured by Saris

Product Information



of Bikes

6, 8 or 10 bikes



Finish

Powder coat black only



Hardware

Anchoring not required



Spacing

Units can be combined in a row
Can be freestanding or mounted
into wall



8 ft ceiling clearance required

Anchors must be purchased separately

Downloadable product resources available online:



CAD Files



SketchUp Files



Written Specs



Photos

EASYLIFT+ TWO TIER

The Easylift+ is a highly convenient gas assist two-level bicycle parking system. The lifting system ensures that a bicycle can be parked on the top level effortlessly.

Key Benefits

- The most successful two tier cycle parking system with 65,000 installed at Dutch stations alone over last 4 years.
- Eight thousand spaces installed in UK over last 4 years
- Easy to use:
 - a. Light aluminium upper arm
 - b. Upper arm on casters for easy glide action
 - c. Upper arm reaches to the floor for ease of loading bike
- European manufacture for quality assurance
- Welded and bolted construction. Security bolts give additional security
- Gas assist action:
 - i. Dampers stop upper arm from falling down uncontrolled
 - ii. Lifts loaded upper arm with little effort



HIGH CAPACITY



THE CODE FOR
SUSTAINABLE
HOMES

BREEAM

Product Name: Easylift + Two Tier

Depth of unit: 1900mm

Minimum manoeuvring space: 2100mm

Track material: Aluminium

Galvanised supports and cross beams:
Finished to BS EN ISO 11461

Handle Material: Red Polymer handle with
steel support

Lowering Mechanism: Gas assisted

Centre to centre per bike: 375mm (standard)
- 400mm - 500mm

Surface mounted: Free standing, no bolting
down into ground required

Configurations:

Single Sided: 4-8-12-16

Double Sided: 8-16-24-32

Units can be bolted onto each other to form
a continuous line to desired length

Modular construction: Can be extended
upon

Security: 3 individual locking points per rack

Warranty required for Two tier: 5 years

Overall Clearance: Minimum Height
required: 2600mm

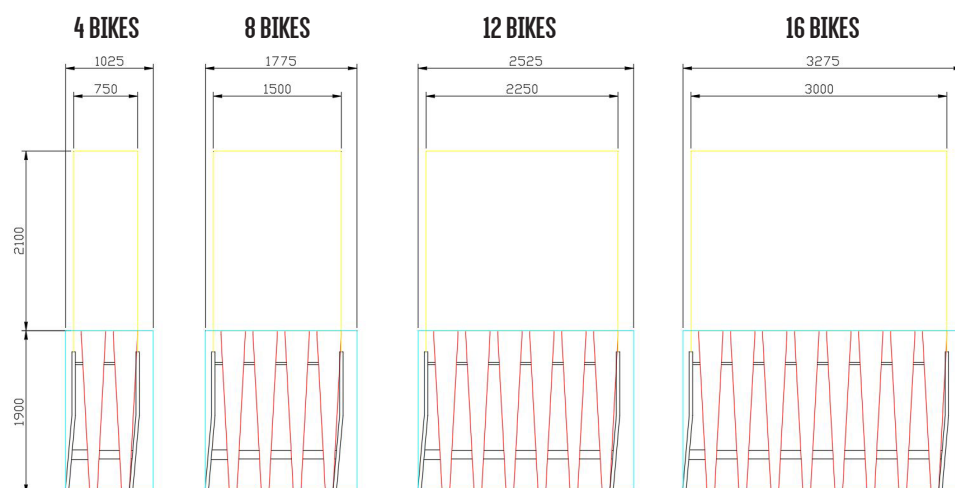
Product Code: ELIFT01 (alu)

Frame Finish Options: Galvanised,
Galvanised and Powder Coated

FIETSPARKEUR achieved in 400mm centres
version

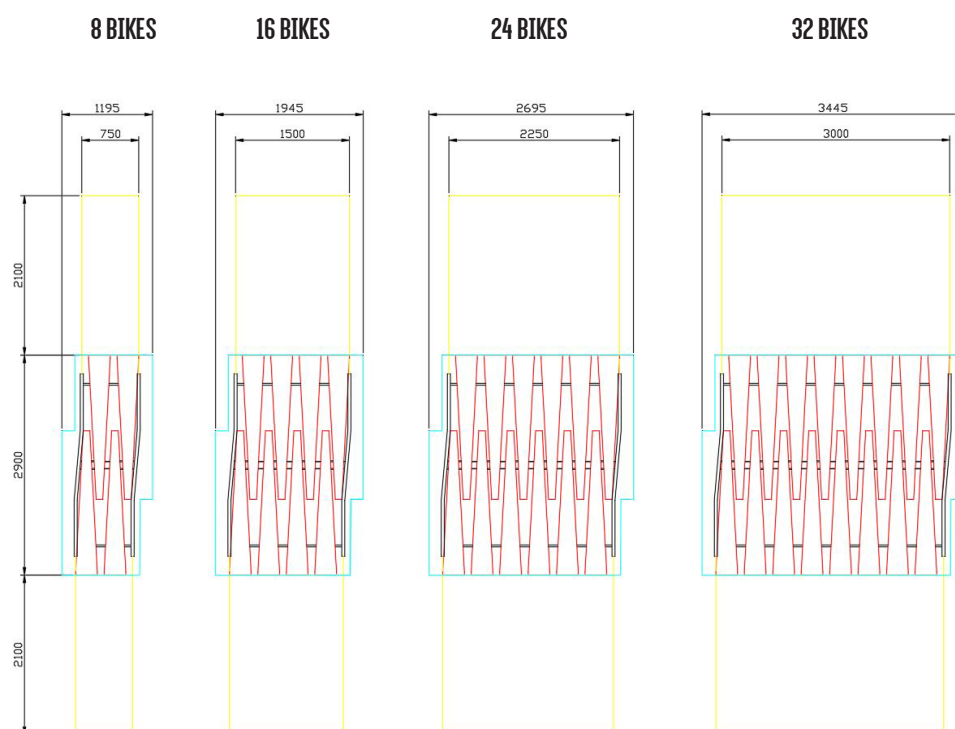
Various shelter options available for all
products.

SINGLE SIDED CONFIGURATIONS

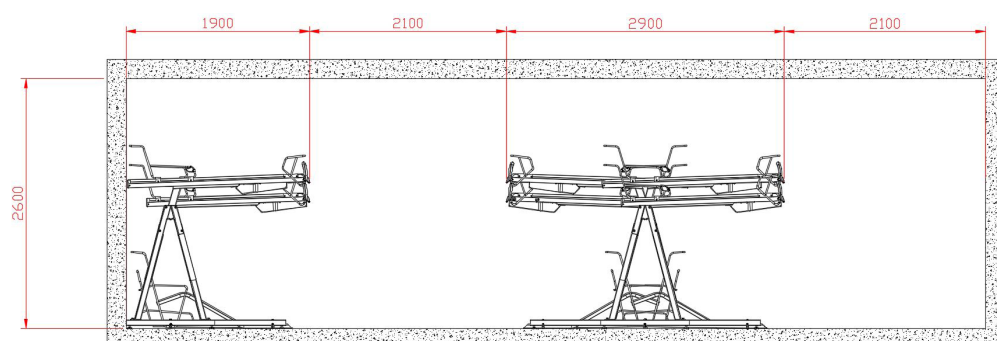


HIGH CAPACITY

DOUBLE SIDED CONFIGURATIONS



SIDE ELEVATION

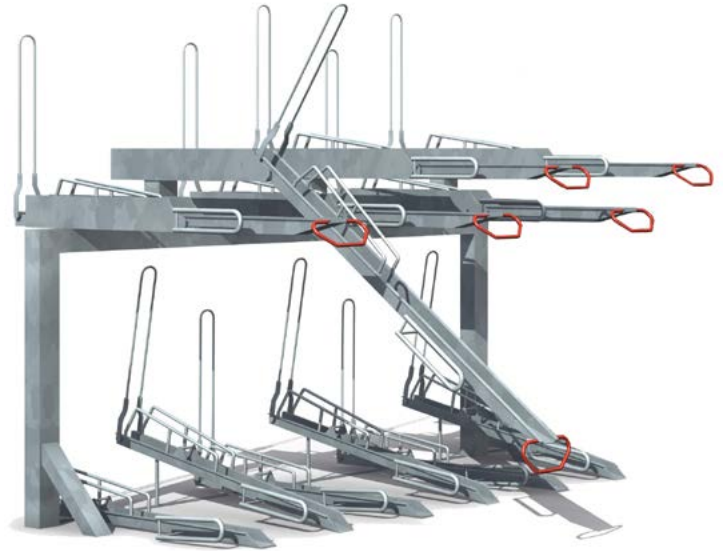




cycle-works

The Cycle Storage Specialists

cycle-works.com • 02392 815 555



Product Specification

Josta 2-tier High Capacity Rack

Description

The 2-tier racks are designed to get the maximum number of bikes into a limited space, in a safe, easy to use way. There are many unique features of the Josta racks, including the low, easy to use handles, the clever, patented way the bikes are held on the racks, and the general ease of use. They are also designed for a long, tough life of constant heavy use, with low maintenance. However, the most important factor is always Safety, and the Josta racks are very safe to use. This is a particularly important feature for heavy bikes.

Features

- Double the capacity of bicycle storage spaces
- Easy and safe to use
- Space efficient
- Flexible and adaptable
- Neat and organised
- Individual racking – one bike per space
- Low maintenance
- Patented gripping system holds bike securely
- Maximises cycle parking spaces
- BREEAM compliant
- Framework can be coloured in any standard RAL colour

Construction

This Rack is made from pre-galvanised and mild steel, the framework can be powder-coated in any RAL colour.

Dimensions

- A minimum headroom of 2600mm is required for maximum capacity.
- 300mm to any adjoining side wall.
- Minimum of 400mm centres (450mm recommended).
- Allow 2000mm for the rack itself, plus a minimum of 1700mm in front for access.
- The racks can also be installed from a central spine. For this option, please leave 2000mm for access on both sides. The 2-sided unit is then 3100mm wide.
- Racks can also be installed at a 45 or 55 degree angle to minimise space.

Optional (£POA)

- Duisburg legs (legs for concrete floor)
- Powder coated framework

Cycle-Works
8-9 Rodney Road
Portsmouth
Hampshire
PO4 8BF

t 02392 815 555
f 02392 815 544
e info@cycle-works.com
w cycle-works.com

Cycle-Works Ltd
Registered in England 3268339



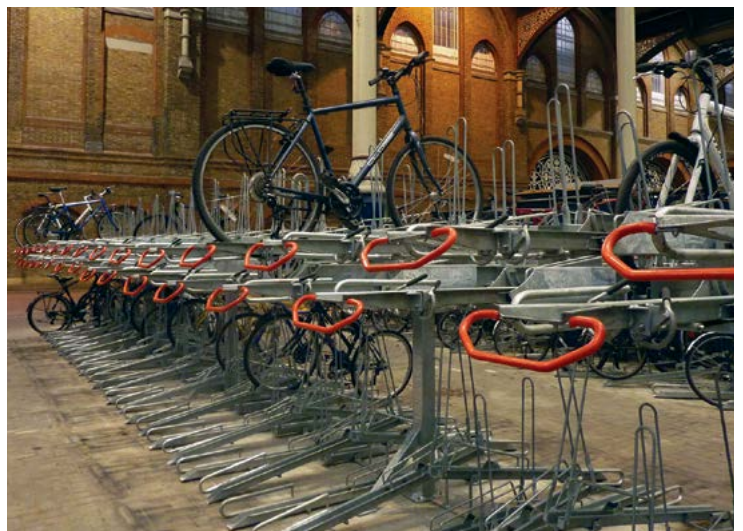


cycle-works

The Cycle Storage Specialists

cycle-works.com • 02392 815 555

Product Gallery



Cycle-Works
8-9 Rodney Road
Portsmouth
Hampshire
PO4 8BF

t 02392 815 555
f 02392 815 544
e info@cycle-works.com
w cycle-works.com

Cycle-Works Ltd
Registered in England 3268339

